



FUNERAL HOME
& CREMATION CENTRE

License 691



Price List

Effective February 15th, 2024

Family owned by
Eric & Susanne Tappenden since 1999

Managing Funeral Director
Alex Elder

Website: www.chapelridgefh.com

Email: info@chapelridgefh.com

Phone: 905-305-8508

Fax: 905-305-8128

Address: 8911 Woodbine Avenue,
Markham, Ontario L3R 5G1

Licensed by the

BAO | Bereavement
Authority of
Ontario

FUNERAL PACKAGES

This list of funeral service packages includes those most commonly selected by families.

The prices do not include caskets, burial vaults, cremation urns, or disbursements paid on your behalf.

For further explanation please feel free to ask your funeral director.

All prices are subject to HST

***Price Match Guarantee**

Chapel Ridge Funeral Home guarantees to match and better by 5% any written quote from any licensed funeral establishment in the Greater Toronto Area.

**OPTION 1. TRADITIONAL FUNERAL SERVICE
WITH 3 HOUR VISITATION DAY PRIOR**

**OPTION 2. SAME DAY FUNERAL SERVICE
WITH 1 HOUR VISITATION**

Professional Staff & Services

Professional Funeral Director	\$1700
Staff for Initial Transfer up to 40 km	\$ 300
Staff for Visitation	\$ 400
Staff for Service	\$ 700
Documentation	\$ 180
Embalming	\$ 540

Vehicles

Transfer Van from place of passing	\$ 300
Funeral Coach	\$ 400
Administration/Lead Vehicle	\$ 200

Facilities & Equipment

Facilities/Equipment for Ceremony	\$ 820
Facilities/Equipment for Visitation	\$ 450
Facilities for Care of Deceased	\$ 255

Package Savings **-\$ 250**

Total: **\$5995**

Professional Staff & Services

Professional Funeral Director	\$1700
Staff for Initial Transfer up to 40 km	\$ 300
Staff for Visitation (Hour Prior)	\$ 150
Staff for Service	\$ 700
Documentation	\$ 180
Embalming	\$ 540

Vehicles

Transfer Van from place of passing	\$ 300
Funeral Coach	\$ 400
Administration/Lead Vehicle	\$ 200

Facilities & Equipment

Facilities/Equipment for Ceremony	\$ 820
Facilities/Equipment for Visitation	INCL.
Facilities for Care of Deceased	\$ 255

Package Savings **-\$ 150**

Total: **\$5395**

**There is no additional charge for services held off-site.
Off-site services require higher staff costs.
On-site services require higher facility costs.*

**OPTION 3. CELEBRATION OF LIFE
OR MEMORIAL SERVICE**

Professional Staff & Services

Professional Funeral Director	\$1700
Staff for Initial Transfer up to 40 km	\$ 300
Staff for Visitation	\$ 150
Staff for Service	\$ 700
Documentation	\$ 180
Alternate Care	\$ 300

Vehicles

Transfer Van from place of passing	\$ 300
Transfer Van to Crematorium	\$ 250
Administration/Lead Vehicle	\$ 200

Facilities & Equipment

Facilities/Equipment for Ceremony	\$ 820
Facilities/Equipment for Visitation	\$ INCL.
Facilities for Care of Deceased	\$ 255

Package Savings **-\$ 60**

Total: **\$5095**

**OPTION 4. SENSIBLE CHOICE
CREMATION PACKAGE**

Professional Staff & Services

Professional Funeral Director	\$1200
Staff for Initial Transfer up to 40 km	\$ 300
Staff for Visitation	N/A
Staff for Service	N/A
Documentation	\$ 180
Alternate Care	\$ 300

Vehicles

Transfer Van from place of passing	\$ 300
Transfer Van to Crematorium	\$ 250
Administration/Lead Vehicle	\$ 200

Facilities & Equipment

Facilities/Equipment for Ceremony	N/A
Facilities/Equipment for Visitation	30 Mins Incl.
Facilities for Care of Deceased	\$ 255

Package Savings **-\$ 295**

Total: **\$2690**

*Cemetery & Cremation fees are not included

**OPTION 5. GRAVESIDE OR CREMATION
WITNESSING SERVICE**

Professional Staff & Services

Professional Funeral Director	\$1550
Staff for Initial Transfer up to 40 km	\$ 300
Staff for Visitation	N/A
Staff for Service	\$ 700
Documentation	\$ 180
Alternate Care	\$ 300

Vehicles

Transfer Van from place of passing	\$ 300
Funeral Coach	\$ 400
Administration/Lead Vehicle	\$ 150

Facilities & Equipment

Facilities/Equipment for Ceremony	N/A
Facilities/Equipment for Visitation	30 Mins Incl.
Facilities for Care of Deceased	\$ 255

Package Savings **-\$ 140**

Total: **\$3995**

**OPTION 6. SHIPPING OUT
TO ANOTHER COUNTRY**

Professional Staff & Services

Professional Funeral Director	\$1600
Staff for Initial Transfer up to 40 km	\$ 300
Staff for Visitation	N/A
Staff for Service	N/A
Documentation	\$ 275
Embalming	\$ 540

Vehicles

Transfer Van from place of passing	\$ 300
Transfer Van to Airport	\$ 250
Administration/Lead Vehicle	\$ 150

Facilities & Equipment

Facilities/Equipment for Ceremony	N/A
Facilities/Equipment for Visitation	30 Mins Incl.
Facilities for Care of Deceased	\$ 255

Package Savings **-\$ 175**

Total: **\$3495**

OPTIONAL SERVICES & MERCHANDISE

Professional Pallbearers or Additional Staff Services	_____	\$ 150
Staff Attendance for Interment of Cremated Remains	_____	\$ 495
Private Family ID time (Options 1, 2 & 3 Add-On)	_____	\$ 500
Extra Day of Visitation (Option 1, 2, or 3 Add-On)	_____	\$ 800
Reception Rooms		
Richmond Room for 2 hrs. plus optional catering costs	_____	\$1000
Unionville Room for 2 hrs. plus optional catering costs	_____	\$1500
Catering	_____	Varies
7 Passenger Limousine (3 Hours + \$150 per half hour)	_____	\$ 450
9 Passenger Limousine (3 Hours + \$150 per half hour)	_____	\$ 500
Flowers	_____	Varies
Flower Van (2 Hours)	_____	\$ 300
Professional Live Streaming	_____	\$ 525
Embalming (Options 3, 4 & 5 Add-On)	_____	\$ 365
Religious Merchandise (Cross, Crucifix, Rosary, Prayer Cards, Pallbearer Gloves)	___	\$ 210
Removal of pacemaker	_____	\$ 195
Refundable deposit for unclaimed cremated remains	_____	\$ 350
Mileage Cost (Outside of 40 km radius)	_____	\$2.50 per km
Storage of Deceased (After 5 days)	_____	\$100 per day
Certified Death Registration Application Fee	_____	\$150

STATIONERY TRIBUTES

Orders of Service

11" x 8.5" folded, fully customized, colour, double-sided \$ 150 per 50

Memorial Folders

4.25" x 5.5" folded, fully customized, colour, double-sided \$ 100 per 50

Thank You Cards

Artist Thomas Kinkade Series cards with white envelopes \$ 25 per 25

Prayer Cards

Standard assorted religious style double sided cards \$ 100 per 100

Picture Prayer Cards

2.6" x 2.75" fully customized, colour, double-sided \$ 200 per 100

Standard Register Book

2.75" x 10" register book \$ 50

Customized Register Book

8.5" x 11" register book \$ 125

Memorial Framed Canvas Portrait

8" x 10" \$ 175

10" x 15" \$ 250

DISBURSEMENTS

There are a number of services and fees, some of which are optional and some of which are necessary. Chapel Ridge will arrange and/or disburse on your behalf for no additional cost.

The following is a partial list.

Clergy and/or Musician Honoraria (At Cost)

Most prefer that this be paid through the funeral home.

Cemetery or Crematorium Fees (At Cost)

Cemetery opening/closing or cremation fees.

Newspaper Notices (At Cost)

Staff can assist with the writing and placing of notices.

Government Fees (At Cost)

Various government and regulatory fees.

Coroner's Cremation Fee (At Cost)

As required

Coroner's Out of Province Fee (At Cost)

As required

Airfare for Shipping (At Cost)

As required

BAO Consumer Protection Fee (At Cost)

The fee is charged by the Bereavement Authority of Ontario (BAO) in order to provide the consumer with information on the options within the bereavement sector and to regulate the profession making sure the law is consistently followed.

PAYMENT POLICIES

For at time of need funerals **50%** of the total cost of the funeral service contract must be paid at the time of arrangements and full payment by the day of the funeral service.

No financing or time payments are provided for.

If payment is an issue, we suggest a bank line of credit or we can provide information regarding Social Services funeral options.

For prepaid funeral contracts, we offer payment terms through TruStage Life of Canada for insurance contracts or Guaranteed Funeral Deposits for trust contracts depending on the age of the client, term of payment and the cost of the plan.

To book a pre-arrangement consultation, please call one of our pre-need funeral director specialists at 905-305-8508.

Additional information pertaining to funding, payment and financing options is available upon request.

CASKET SELECTION

All caskets listed are Adult Size

All wood caskets listed are
suitable for cremation



710 PRESIDENT MAHOGANY

SOLID DARK MAHOGANY
SILVERBEIGE VELVET
INTERIOR
TIME HONORED
CRAFTMANSHIP

BATESVILLE # 202149

\$12,095



THE PREMIER MAHOGANY

ONE OF THE WORLD'S FINEST
SOLID MAHOGANY CASKETS
WITH A HIGH GLOSS FINISH
AND CHAMPAGNE
VELVET INTERIOR
AVAILABLE IN FULL COUCH

BATESVILLE #148244

\$11,980



THE PEMBROKE CHERRY

BEAUTIFULLY DESIGNED SOLID
CHERRY SHELL DESIGN
CHAMPAGNE VELVET INTERIOR
HAND-RUBBED HIGH GLOSS
FINISH WITH ACCENT BEADING
MILANO PEARL
VELVET INTERIOR
AVAILABLE IN FULL COUCH

BATESVILLE #148227

\$8,980



THE PARLIAMENT OAK

SOLID RED OAK
WITH AN URN BODY SHELL
PERSIAN FAWN HAND
RUBBED GLOSS FINISH
ELITE IVORY VELVET INTERIOR

VICTORIAVILLE # WR210-20848

\$6,495



THE CROSS

SOLID MAHOGANY
ROSETAN VELVET INTERIOR
CARVED CROSS CORNERS

LEE & G # 702

\$4,995



THE SACRAMENT

MAPLE SOLIDS AND
ENGINEERED WOOD
CONSTRUCTION WITH
LAST SUPPER HANDLES
INTERCHANGEABLE LIFE
SYMBOL CORNERS
CHAMPAGNE VELVET INTERIOR
MEMORY SAFE DRAWER

BATESVILLE #205164

\$5,095



THE MERLOT

18 GAUGE STEEL CASKET
NEW LIFE STORIES
MEDALLIONS
MEMORY SAFE DRAWER
CHAMPAGNE SIERRA INTERIOR

BATESVILLE #239694

\$4,995



THE WOODFORD PECAN

PECAN SOLIDS AND
ENGINEERED PECAN
CONSTRUCTION
INTERCHANGEABLE LIFE
SYMBOL CORNERS
LIFE STORIES MEDALLIONS
CHAMPAGNE VELVET INTERIOR

BATESVILLE #242987

\$4,380



THE ELEANOR OAK

SOLID OAK CASNET WITH A
BURNISHED GOLDEN FINISH
OCTAGON CORNERS
PINK CREPE INTERIOR WITH A
ROSE MOTIF

BATESVILLE #195908

\$3,980



THE MUIRFIELD MAPLE

SOLID MAPLE CONSTRUCTION
WOOD BAR HANDLES
BRONZE METAL ACCENTS
ROSETAN CREPE INTERIOR

BATESVILLE #195853

\$4,280



THE HAMILTON

SOLID POPLAR
POLISHED MAHOGANY FINISH
ROSETAN VELVET INTERIOR

LEE & G # 101

\$3,980



THE DOMINION

SOLID SILVER MAPLE
RICH MAHOGANY TITIAN
POLISH FINISH
TAN CREPE INTERIOR
WOOD BAR HANDLES

VICTORIAVILLE #20-5610-09

\$4,480



THE HADYN

SOLID POPLAR
WARM LIGHT WALNUT
GLOSS FINISH
WOOD BAR HANDLES
ROSETAN CREPE INTERIOR
INTERCHANGEABLE LIFE
SYMBOL CORNERS

BATESVILLE #195866

\$4,180



THE ROSETTE

PREMIUM POPLAR VENEERS
ENGINEERED SOLIDS
NATURAL EYELIT INTERIOR
CHERRY HIGH GLOSS FINISH

AVAILABLE IN FULL COUCH
242708

BATESVILLE # 242707

\$4,180





THE RILEY

VENEER CONSTRUCTION
DEEP RED FINISH
LINWOOD CREPE INTERIOR
WOOD BAR CARRIERS
GOLD TONE ACCENTS

AVAILABLE IN FULL COUCH
263784

BATESVILLE # 263783

\$3,880



THE MONTGOMERY

SELECT WOODS
GLOSS WALNUT FINISH
WOOD BAR HANDLES
GOLD ACCENTS
INTERCHANGEABLE LIFE
SYMBOL CORNERS

BATESVILLE # 249223

\$3,680





THE GURNET

POPLAR WOOD
POLISHED MAHOGANY FINISH
ELEGANT BEIGE RAYON
INTERIOR

AVAILABLE IN FULL COUCH
217987

BATESVILLE # 146825

\$3,380



THE CHESTNUT BROWN

SOLID POPLAR
PURITAN STAIN
ROSETAN CREPE INTERIOR
WOOD CARRIERS WITH BRASS
HARDWARE

AVAILABLE IN FULL COUCH
#229306

BATESVILLE #148244

\$3,380



THE OXFORD

SELECT WOODS
WARM GOLDEN FINISH
ROSETAN CREPE INTERIOR
WOOD BAR CARRIERS
GOLD TONE ACCENT
HARDWARE

BATESVILLE # 146824

\$2,990



THE LYNX BROWN

SOLID WOOD CONSTRUCTION
LIGHT WALNUT BROWN
MATTE FINISH
ROSETAN CREPE INTERIOR
WOOD BAR CARRIERS

AVAILABLE IN FULL COUCH
#262617

BATESVILLE #148244

\$2,780





THE DRYDEN

SELECT HARDWOODS AND
VENEER CONSTRUCTION
ROSETAN CREPE INTERIOR
CHERRY STAIN FINISH
OPTIONAL LIFE SYMBOL
CORNERS

BATESVILLE #274158

\$2,780



THE DOMINION CEREMONIAL

(RENTAL CASKET FOR CREMATION ONLY)

SOLID SILVER MAPLE
MAHOGANY TITIAN FINISH
TAN CREPE INTERIOR
WOOD BAR HANDLES
INCLUDES PINE INTERIOR &
INTERIOR

VICTORIAVILLE # WL220-00007

\$2,190





THE GREY DOESKIN

EMBOSSSED VICUNA CLOTH
COVERED PARTICLE BOARD
WITH SWELL TOP
WHITE CREPE INTERIOR
METAL BAR HANDLES

BATESVILLE # 147970

\$1,690



THE EDEN ENVIRO

UNFINISHED POPLAR
4 WOOD HANDLES
WHITE CREPE LINING

NORTHERN # 102

\$990



PARTICLEBOARD CREMATION CONTAINER

PARTICLE BOARD
CONSTRUCTION
ROPE HANDLES, NO INTERIOR
SUITABLE FOR
IMMEDIATE CREMATION

NORTHERN # 10

\$490



LAKEVIEW CREMATION TRAY

PARTICLE BOARD CREMATION
CONTAINER BASE
CARDBOARD LID
FABRIC STRAP HANDLES
FOR IMMEDIATE
CREMATION ONLY

LAKEVIEW # 1

\$450

URN SELECTION

All urns listed are Adult Size

Ⓔ Indicates personalized engraving is available

Bronze and Sheet Metal Urns

The Aristocrat

Batesville: 100199
 H 11"
 L 7.75"
 W 7.75"
 -Solid bronze
 -Limited to text only



\$1,795 (E)

Bronze Horizontal

Batesville: 100199
 H 6.06"
 L 7"
 W 6.69"
 -Sheet Bronze
 -Life Symbol



\$795 (E)

The Milan

Batesville: 100059
 H 10.25"
 L 6.13"
 W 6.13"
 -Solid bronze



\$1,295 (E)

Pewter Bronze Vertical

Batesville: 235556
 H 9.06"
 L 8.50"
 W 4.44"
 -Sheet Bronze
 -Life Symbol



\$795 (E)

Bronze Vertical

Batesville: 235554
 H 9.06"
 L 8.50"
 W 4.44"
 -64 oz Sheet Bronze
 -Life Symbol Accent



\$795 (E)

Pewter Bronze Horizontal

Batesville: 100199
 H 6.06"
 L 7"
 W 6.69"
 -Sheet Bronze
 -Life Symbol



\$795 (E)

Metal Urns

Delphia Wings

Batesville: 235716
 H 9.75"
 L 6.69"
 W 6.69"
 -Cast in Brass



\$595 (E)

Returning Home

Commemorate:
 A501
 H 10"
 D 6.25"
 -Cast in Brass



\$550

Flying Doves

Commemorate:
 A572
 H 9.5"
 D 7"
 -Cast in Aluminum



\$450

Monarch Platinum

Commemorate:
 A251
 H 11.75"
 D 7.25"
 -Cast in Brass



\$550

Mother of Pearl

Commemorate:
 A230
 H 9.5"
 D 7"
 -Cast in Brass



\$495

Ashen Pewter

Batesville: 205396
 H 9.75"
 L 6.88"
 W 6.88"
 -Cast in Brass



\$450 (E)

Cloisonne Urns

Larkspur

Wilbert:
PW28000212-C
H 9"
D 8"
-Cast in Copper



\$795

Cameo Rose

Wilbert:
P2010-C
H 9"
D 8"
-Cast in Copper



\$795

Autumn Leaves

Wilbert:
P2009-C
H 11"
D 7"
-Cast in Copper



\$795

Blue Cloisonne

Wilbert:
Pw28000212-C
H 9"
D 8"
-Cast in Copper



\$795

Lilac Cloisonne

Wilbert:
Pw2800211
H 9"
D 8"
-Cast in Copper



\$795

Red Rosette

Batesville: 270113
H 10.25"
L 6.13"
W 6.13"
-Cast in Copper



\$795

Unique Urns

Spring

Wilbert:
P5000
H 11"
D 8"
-Hand-blown glass



\$1,295

Summer

Wilbert:
P5001
H 11"
D 8"
-Hand-blown glass



\$1,295

Autumn

Wilbert:
P5002
H 11"
D 8"
-Hand-blown glass



\$1,295

Winter

Wilbert:
P5003
H 11"
D 8"
-Hand-blown glass



\$1,295

Sapphire Seas

Wilbert:
P612
H 11"
D 8"
-Hand-blown glass



\$1,295

Versatile Urn

Begin Urns VC
H 8.5"
W 4.75"
L 7"
-Custom aluminum



\$485 (E)

Marble Urns

White Pearl

Sentiments:
1104
H 10.5"
D 8"
-White marble
-Soft grey accents



\$595

Green Marble

Sun Li
017
H 8.4
D 6.5"
-Green jade
coloured marble



\$495

Onyx Green

Sentiments:
1113
H 10.5"
D 8"
-Green marble
-Mixed colours



\$595

White Marble

Lee & G
094
H 8.4"
D 6.5"
-White marble



\$495

Cloud Grey

Sentiments:
1106
H 10.5"
D 8"
-White marble
-Mixed grey colours



\$595

Navy Marble

Batesville: 238320
H 6.38"
L 6.75"
W 9.69"
-Blue marble



\$495 (E)

Wood Urns

Fredricksburg

Batesville: 100107
H 9.5"
L 8.75"
W 8.75"
-Solid Cherry



\$1,395 (E)

Walnut Memento

Batesville: 148351
H 6"
W 10.38"
L 8.13"
-Solid Walnut



\$695 (E)

Solaris

Batesville: 272094
H 10.25"
L 6.13"
W 6.13"
-Select Hardwood



\$695 (E)

Wolton Distressed

Batesville: 270049
H 6"
w 8"
L 11"
-Distressed engineered
wood construction



\$550 (E)

Bradbury

Batesville: 208692
H 8.5"
W 11.44"
L 10.63"
-Solid Pecan
-Life Symbol



\$495 (E)

Braxton Maple

Batesville: 255706
H 6.70"
W 9.25"
L 6.88"
-Engineered
wood construction



\$295 (E)

Wood Urns

Classic Jewel Box Mahogany

Victoriaville:
US101-00233
W 11"
L 8"
H 5.5"
-Solid Mahogany



\$595 (E)

Raised Panel

NorthUrn:
NU209C
H 7"
L 11.6"
W 7"
-Maple stained poplar



\$495 (E)

Classic Jewel Box Oak

Victoriaville:
US110-00253
W 11"
L 8"
H 5.5"
-Solid Oak



\$595 (E)

Standard Plain

NorthUrn:
NU201
H 9"
L 6.5"
W 6.5"
-Poplar construction



\$295 (E)

Circle of Life

NorthUrn:
NU211
H 6.5"
L 10"
W 6"
-Cherry stained poplar



\$450 (E)

Ember Urn

NorthUrn:
NU201E
H 9"
L 6.5"
W 6.5"
-Poplar construction



\$295 (E)

Enviro Urns

Butterfly Reflections

Batesville: 252359
H 5"
L 9"
W 6"
-Pressed cotton



\$295

Spiritual Reflections

Batesville:
240070
H 4.5"
W 21.25"
L 21.25"
-Pressed cotton



\$625

Spiritual Reflections

Batesville:
240070
H 4.5"
W 21.25"
L 21.25"
-Pressed cotton



\$625

Scattering Tubes

Passages International

H 12.6" x D 5" Cardboard



19th Hole
PI-NH



Sunflowers
PI-SF



Rainbow Pond
PI-RP



Ocean Sunset
PI-OS

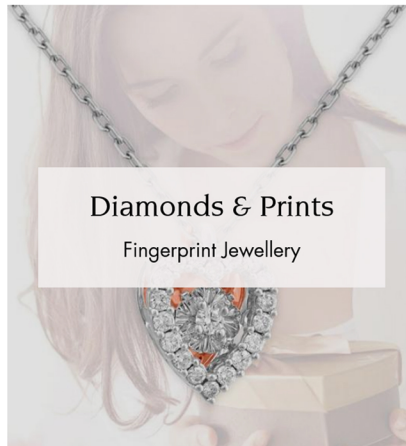
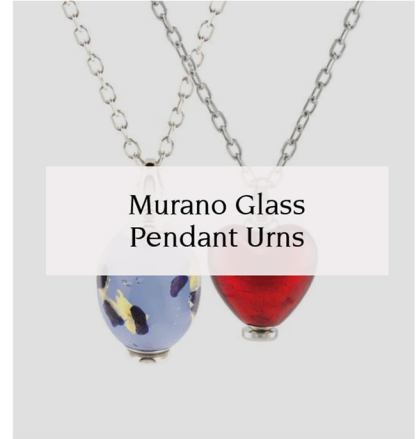
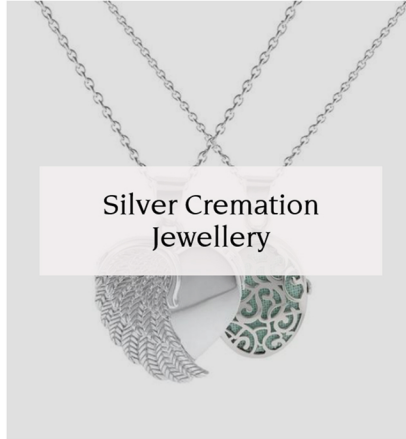


Bluebell
PI-BF



Dove
PI-ADM

loved remembered™



Full product line and pricing



www.lovedremembered.com

VAULT SELECTION

MONTICELLO

2,000 LBS
50 YEAR WARRANTY
SINGLE-REINFORCED VAULT
CONCRETE EXTERIOR
PLASTIC-REINFORCED
COVER AND BASE
NAME PLATE, DATES, &
EMBLEM INCLUDED

WILBERT # WM30

\$1,890



VENETIAN

2,600 LBS
65 YEAR WARRANTY
HIGH STRENGTH
CONCRETE EXTERIOR
PLASTIC-REINFORCED
COVER AND BASE
PERSONALIZATION CHOICES
AVAILABLE

WILBERT # WV30

\$2,530



CAMEO ROSE

3,000 LBS
75 YEAR WARRANTY
MID-LINE VAULT
DOUBLE REINFORCED UNIT
STAINLESS STEEL COVER
AND INTERIOR
PERSONALIZATION CHOICES
AVAILABLE

WILBERT # CR30

\$3,620



STAINLESS STEEL TRIUNE

3,000 LBS
75 YEAR WARRANTY
HIGH STRENGTH
CONCRETE EXTERIOR
PLASTIC-REINFORCED
COVER AND BASE
PERSONALIZATION CHOICES
AVAILABLE

WILBERT # SST30

\$3,620



BRONZE TRIUNE

3,000 LBS
75 YEAR WARRANTY
DOUBLE REINFORCED VAULT
HIGH STRENGTH CONCRETE
COVER AND BASE
REINFORCED WITH
NON-RUSTING BRONZE
BRONZE ACCENTS

WILBERT # BT30

\$4,380



COPPER TRIUNE

3,000 LBS
75 YEAR WARRANTY
DOUBLE REINFORCED VAULT
HIGH STRENGTH CONCRETE
COPPER COVER AND BASE
REINFORCED WITH
NON-RUSTING COPPER

WILBERT # CT30

\$4,595



Glossary of Terms & Definitions

Professional Funeral Director

Professional consultation with a licensed funeral director, which may include but is not limited to expert advice with regard to options to meet your needs, including essential services relating to the preparation of the remains of your loved one, interment, cremation or shipment, drafting newspaper notices, planning and scheduling of visitations, services, dispositions, receptions and filing necessary government documentation (cancellation of SIN #, CPP death or survivor benefits if any)

Other Staff Services for Visitation/Services/Receptions

Includes but is not limited to the staff overseeing visitations, services, receptions, parking, general duties, secretarial and janitorial duties. Each staff member is here to serve your family with personal care and excellence.

Staff for Initial Transfer

Staff required for transportation of your loved one from the place of passing into our care at the funeral home. These staff members are on call 24/7 and can be dispatched at a moment's notice.

Documentation

Completion and filing of any and all documents necessary to carry out the services and supplies requested, including, but not limited to the death registration, burial permit, coroner's cremation or ship out certificate, etc. We also provide an unlimited number of Proof of Death Certificates and assist with any government benefits available.

Embalming

Embalming is the process of sanitation, restoration and temporary preservation. Embalming is not legally required but is recommended to preserve your loved one between the time of passing and the services requested. This fee also includes bathing, dressing, casketing, hair styling, makeup and any restoration required.

Alternate Care

When embalming is not chosen, we bathe and dress your loved one prior to casketing.

Transfer Vehicle

The transfer vehicle is an unmarked vehicle which is used for the initial transportation from the place of passing into our care at the funeral home.

Funeral Coach

The funeral coach (Hearse) is the vehicle used for transportation of your Loved one and the selected casket to the place of visitation, service, and disposition location.

Administration/Lead Vehicle

This vehicle is used for any and all registration of necessary documentation at a variety of locations across the GTA, leading the funeral procession, transportation of clergy, retrieval of cremated remains from crematoriums, it can also be used for transportation of up to 4 family members.

Facilities for Ceremony

Designated facilities at our Funeral Home used for the ceremony or memorial service. Also includes any AV equipment available or requested.

Preparation Facility & Equipment

Designated facilities at our Funeral Home for the required preparations and storage. Including; Embalming, bathing, dressing, casketing and refrigeration.

Facilities for Visitation

Designated facilities at our Funeral Home for the visitation. Also includes any AV equipment available or requested.



Contact Us Today!

Proudly Serving the Communities of Markham, Stouffville, Richmond Hill, Thornhill, Scarborough, York Region, Durham Region, GTA.

✉ info@chapelridgefh.com

☎ (905) 305-8508

📍 8911 Woodbine Avenue Markham, ON L3R 5G1

